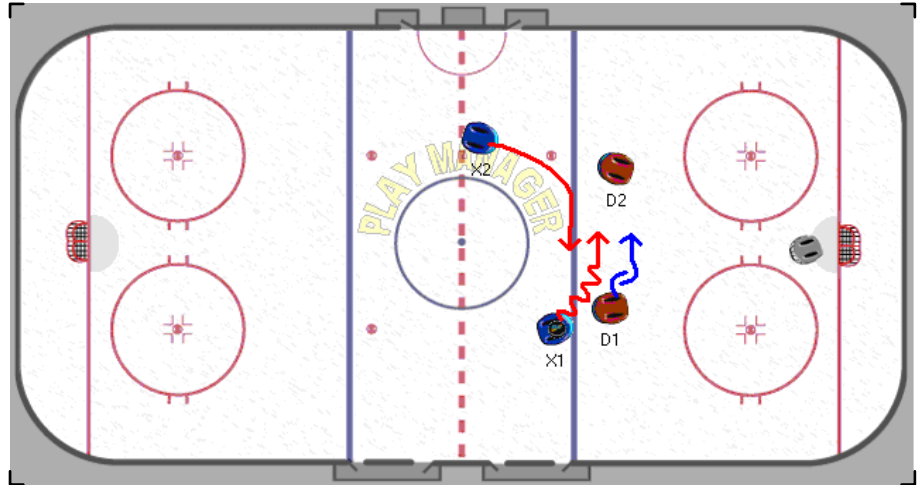


Hockey Sample Plays

2 on 2 Cross and Drop

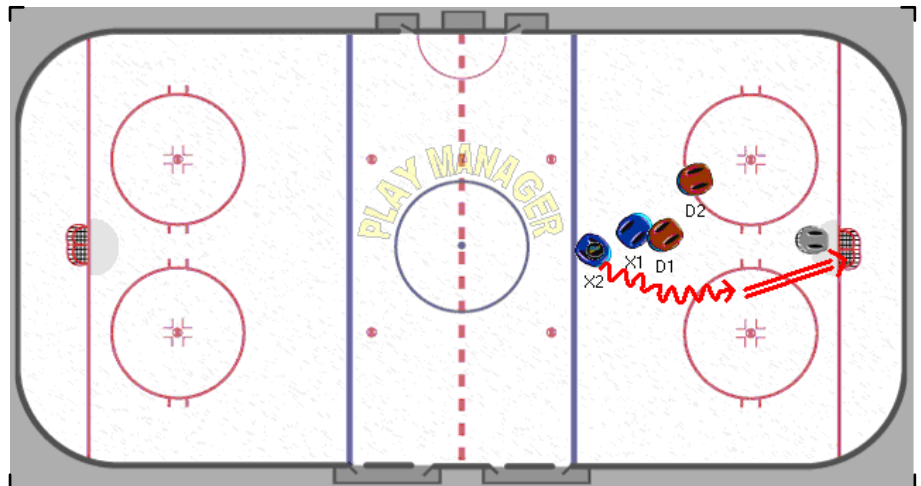
Puck carrier takes the blue line, being careful not to get poke-checked by the defense. Once the line is taken, he skates across the grain, baiting defense. Off-puck player takes pass with enough speed in the other direction to get good clear shot.

X1 can exploit the gap the D1 has given him by taking the blue line and starting the criss-cross. X2 sees this and responds.



#1 - [3.78]

After the drop-pass, X2 skates into open ice for a good scoring chance. D2 has been eliminated.



#2 - [5.02]